

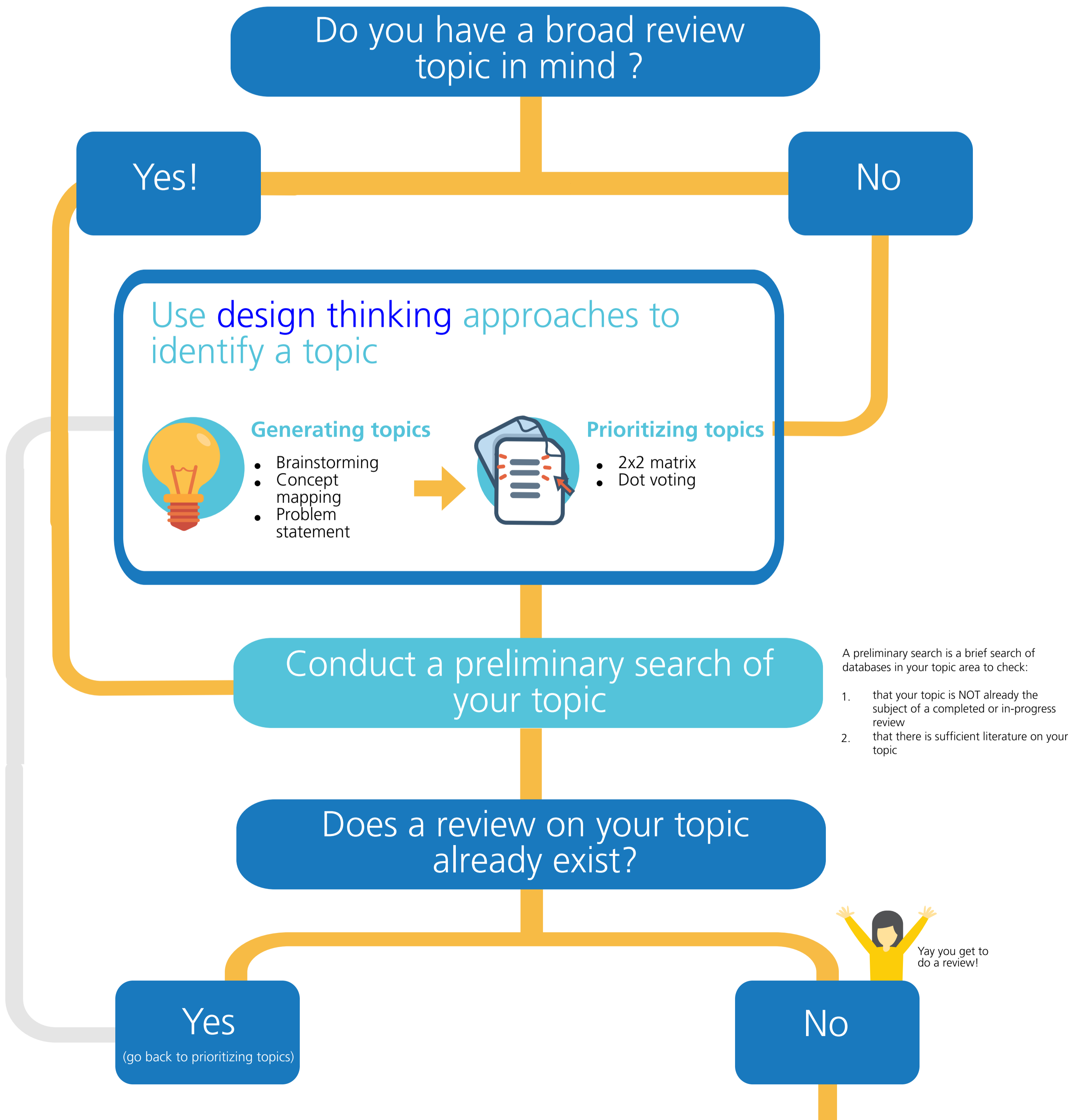
# Starting your knowledge synthesis

A practical guide for researchers new to evidence synthesis



**Holland Bloorview**  
Kids Rehabilitation Hospital

Created by Joanne Wincentak MSc(OT) | Holland Bloorview Kids Rehabilitation Hospital | Evidence to Care 2019 ©



# Decide between a systematic and scoping review

Note:  
There are other  
review types

## Systematic review

### Purpose

Seeks to systematically search for, appraise and synthesize research

### Indication

#### Determine effectiveness

Does early intervention increase gross motor function in kids with CP?

#### Analyze human experience

What are the experiences of kids with ASD during school transitions?

#### Assess measurement quality

What are the measurement properties of assessments on parent engagement in rehabilitation for kids?

### Output

- Implications or recommendations for practice through critical appraisal
- Gaps in the literature
- Address conflicting results

## Scoping review

### Purpose

Aims to identify the nature and extent of research

### Indication

#### Identify the state of evidence in a given field

What types of KT products do allied health professionals use?

#### Clarify definitions or concepts

How is 'medical complexity' defined?

#### Examine methods used to conduct research on a specific topic

Which methods are used to research biofeedback?

#### Identify characteristics of an intervention, model, practice

What are the characteristics of infant care models?

### Output

- Informs best practice. But, implications for practice can be more limited than those from a systematic review
- Gaps in the literature
- Rationale for systematic review

## Focus the research question

Once you have scoped the literature and decided on the review type, frameworks can be used to focus the research question. Two commonly used frameworks are:

### Framework Description

**PICO(T)**  
Population (description of the group)  
Intervention (intervention, therapy, practice)  
Comparison (alternative to the intervention)  
Outcome (goal of intervention)  
Type of study or time factors

### Review type

Systematic review

**PCC**  
Population (description of the group)  
Concept (intervention, phenomena, characteristic)  
Context (care setting, location)

Scoping review



# Next steps

This brings us to the end of 'starting' your knowledge synthesis

The next steps are to:

1

Use the PRISMA guide to create a protocol for your:

- Systematic review (**PRISMA-SR**) or
- Scoping review (**PRISMA-ScR**)

2

Refer to a trusted manual for your:

- Systematic review guided by **Cochrane** or
- Scoping review guided by **Joanna Briggs** or by **Colquhoun et al.** (2014).

## Acknowledgments

Thank you to Fanny Hotzé, Carly Cermak and Shauna Kingsnorth for their thoughtful feedback.

## References

Colquhoun, H, Levac, D., O'Brien, K., Straus, S. Tricco, A., Perrier, L., Kastner, M., Moher, D. (2014). Scoping review: Time for clarity in definition, methods and reporting. *Journal of Clinical Epidemiology*, 67(12), <https://doi.org/10.1016/j.jclinepi.2014.03.013>

Munn, Z., Peters, M., Stern, C., Tufanaru, C., McArthur, A., & Aromataris, E. (2018). Systematic review or scoping review? Guidance for authors when choosing between a systematic or scoping review approach. *BMC Medical Research Methodology*, <https://doi.org/10.1186/s12874-018-0611-x>

Munn, Z., Stern, C., Aromataris, E., Lockwood, C., & Jordan, Z. (2018). What kind of systematic review should I conduct? A proposed typology and guidance for systematic reviews in the medical and health sciences. *BMC Medical Research Methodology*, <https://doi.org/10.1186/s12874-017-0468-4>

Robert Gordon University. (2018). Systematic reviews: Question and protocol. Retrieved from: <https://libguides.rgu.ac.uk/c.php?g=536793&p=3673880>

The Joanna Briggs Institute. (2015). The Joanna Briggs Institute Reviewers' Manual 2015: Methodology for JBI Scoping Reviews. Retrieved from: [http://joannabriggs.org/assets/docs/sumari/Reviewers-Manual\\_Methodology-for-JBI-Scoping-Reviews\\_2015\\_v2.pdf](http://joannabriggs.org/assets/docs/sumari/Reviewers-Manual_Methodology-for-JBI-Scoping-Reviews_2015_v2.pdf)